



ERWAN

Total Solution Provider For Clinical Laboratory

TEST KIT BROCHURE



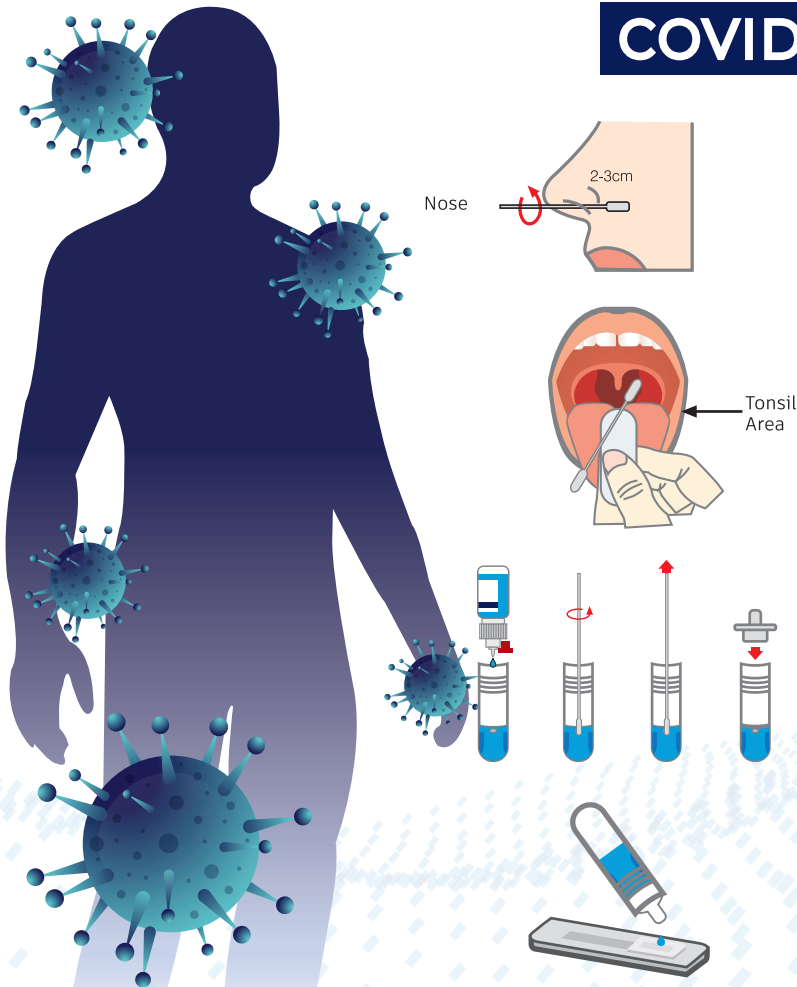
ISO : 13485



FS 756347

BROCHURE

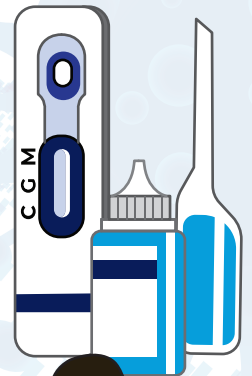
COVID-19 RTK-Ag



- Only a trained person can conduct the rapid antigen test
- Must be done within 5 - 7 days of symptom onset
- Particularly for a new cluster with a high transmission rate
- Recommended when the health system is under pressure
- Test sensitivity must be > 80% & specificity > 97%

UTILISATION

- When the RT-PCR test turnaround time is slow
- When the RT-PCR test is unavailable



MESS TESTING

- Was used in Sabah from October 5, 2020 - January 14, 2021

365,740

tested conducted

3.75%

positivity rate

- Used on foreign workers as well



RTK-Ag : Antigen rapid test kit
RT-PCR : Reverse transcription-polymerase chain reaction



Made in Malaysia
Total Solution Provider For Clinical Laboratory

PRODUCT PACKAGING**ANTIGEN RAPID TEST KIT
BOX PACKAGING (25 TEST)****ANTIGEN RAPID TEST KIT
INDIVIDUAL BOX****ISO : 13485**

PRODUCT PACKAGING

ANTIGEN RAPID TEST KIT OUTER BOX PACKAGING (25 TEST)



PRODUCT PACKAGING

ANTIGEN RAPID TEST KIT INDIVIDUAL BOX PACKAGING (1 TEST)



PRODUCT PACKAGING

ANTIGEN RAPID TEST KIT HOLDER BOX PACKAGING



PRODUCT PACKAGING**ANTIGEN RAPID TEST KIT
FULL KIT**

PRODUCT PACKAGING

SALIVARY RAPID TEST KIT BOX PACKAGING (10 TEST)



PRODUCT PACKAGING

SALIVARY RAPID TEST KIT INDIVIDUAL BOX

